

Notice to Mariners

07/2016

Aids to Navigation

London Array Offshore Wind Farm

Date of Notice

05/12/2016

Please promulgate the following as a Notice to Mariners:

Work Site:

The London Array Offshore Wind Farm is located approximately 20km from the Kent and Essex coasts in the outer Thames Estuary. The wind farm consists of 175 turbines delivering a capacity of 630MW. Two offshore substations export the generated electricity to shore based facilities from where it is distributed to the National Grid. The wind farm is located between two sandbanks, Long Sand and Kentish Knock and has varying water depths across the site ranging from 0 to 23m LAT.

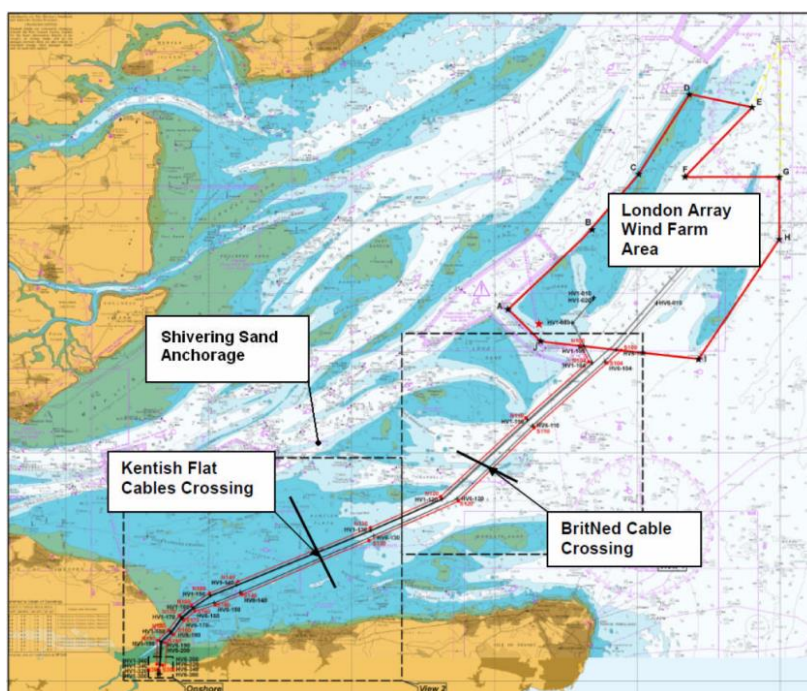


Figure 1: London Array Offshore Wind Farm Location

**Aids to Navigation:**

Please be aware the following turbine fog horns are currently inoperable, repair works have been planned and progress will be advised via future Notice to Mariners:

A10

D20

J06

M20

Further Information:

Should you require any further information regarding the above information please do not hesitate to contact:-

Contact: Duty Marine Coordinator
Telephone : +44 (0)1843 855 795
Email: marinecoordinators@londonarray.com

London Array Operations & Maintenance
Military Road
Ramsgate
Kent
CT11 9LG
London
United Kingdom

Any general enquiries for the London Array Wind Farm can be directed through its website* using the enquiry form at "Contact Us" <http://www.londonarray.com/contact-us/>

*Website enquiries are monitored on a daily basis