



Notice to Mariners

14/2015

London Array Offshore Wind Farm

Date of Notice

13th August 2015

Please promulgate the following as a Notice to Mariners:

London Array Offshore Wind Farm – Benthic Survey

London Array will soon begin a benthic survey and this is likely to start on 19th August 2015. The survey will be undertaken by the vessel **Seiont A** and will consist of grab sampling in set locations, drop down cameras in some locations and some benthic trawl surveys. The duration of the survey is anticipated to be 10-15 days, weather permitting.

The London Array Offshore Wind Farm is located approximately 20km from the Kent and Essex coasts in the outer Thames Estuary. The wind farm consists of 175 turbines delivering a capacity of 630MW. Two offshore substations export the generated electricity to shore based facilities from where it is distributed to the area of Greater London. The wind farm is located between two sandbanks, Long Sand and Kentish Knock and has varying water depths across the site ranging from 0 to 23m LAT.

Figure 1: London Array Offshore Wind Farm Location

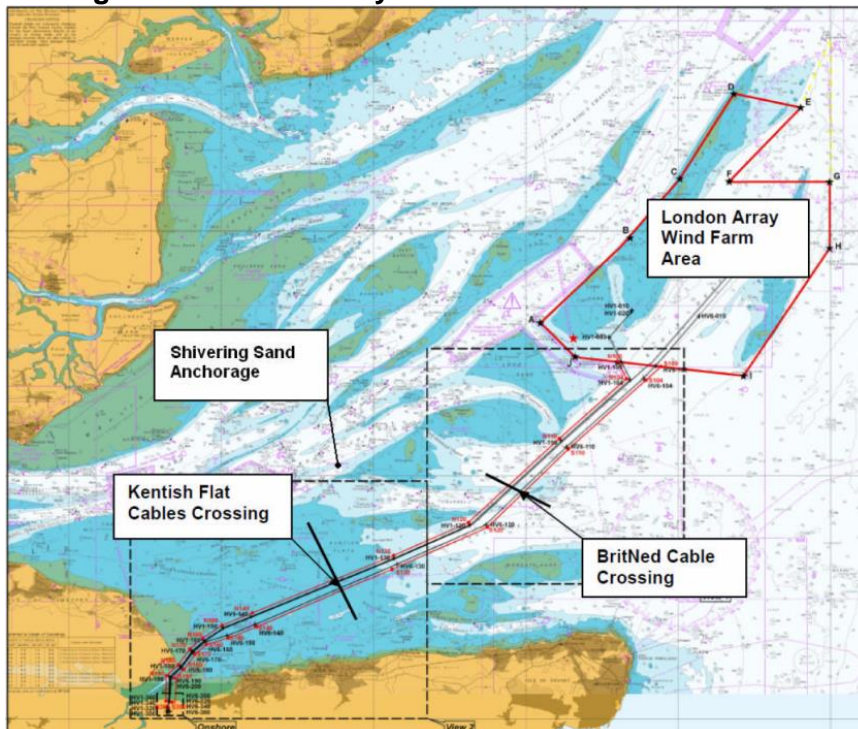
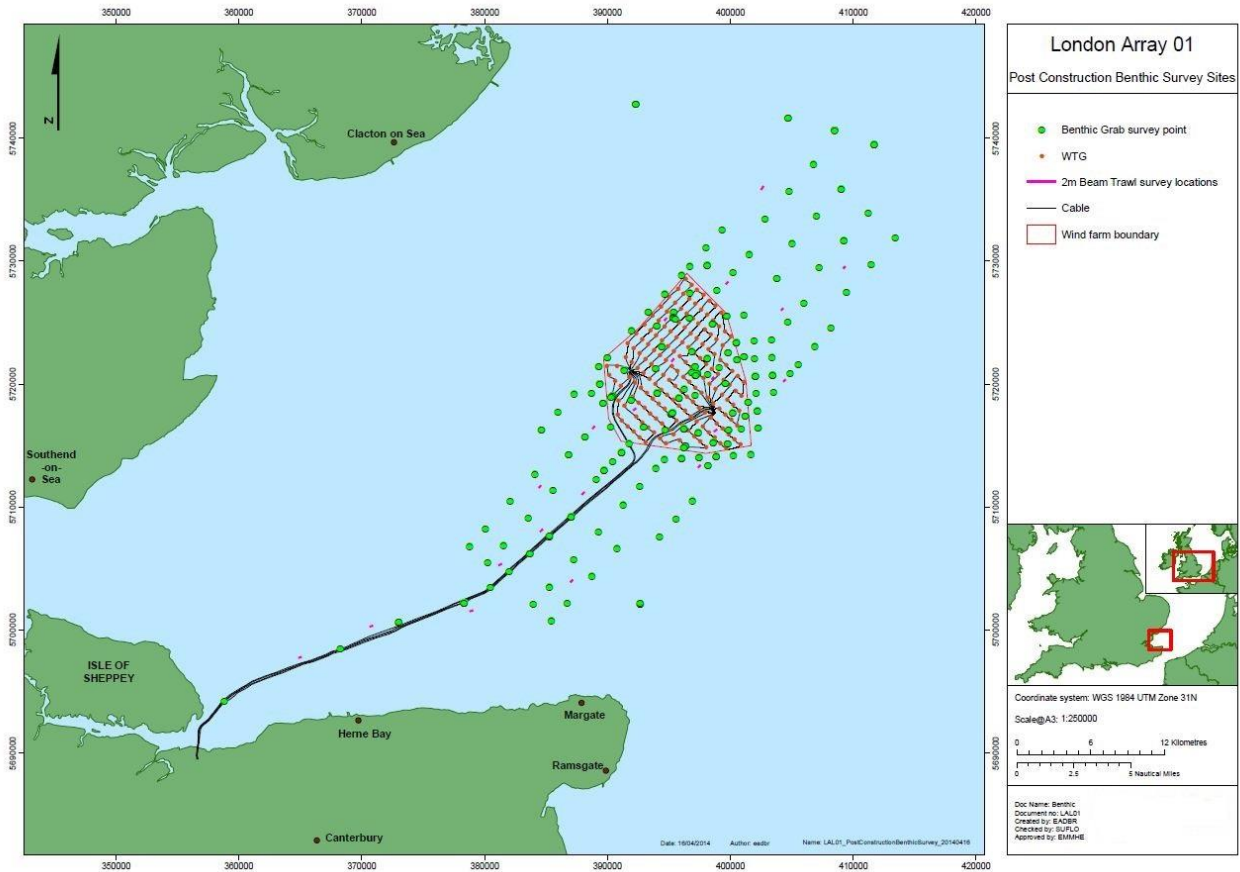




Figure 2: Area of Survey



Vessels

Seiont - A



- **General information**
- **Current Vessel Name:** Seiont A
- **Type of Vessel:** Coastal survey vessel
- **CALLSIGN:** M.W.H.L
MMSI: 235001428
PLN: BM 114
L.O.A: 17.00 M
BEAM: 5.10 M
DRAFT: 2.30 M



Operational Overview:

The survey will consist of grab sampling in set locations; drop down cameras in some locations and some benthic trawl surveys.

Safety Zones & Site Restrictions:

Vessels operating in the area are advised not to approach without making contact first.

Key Dates:

Estimated start date: 19th August 2015

Estimated finish date: September 2014

Further Information:

Should you require any further information regarding the above operations please do not hesitate to contact:

Offshore Coordinator
London Array Ltd
Construction Management Building
Port of Ramsgate
Military Road
Ramsgate CT11 9LG
UK

+44 07920854358 or marinecoordinators@londonarray.com