

# Notice to Mariners

01/2016

## Subsea Inspection Campaign London Array Offshore Wind Farm

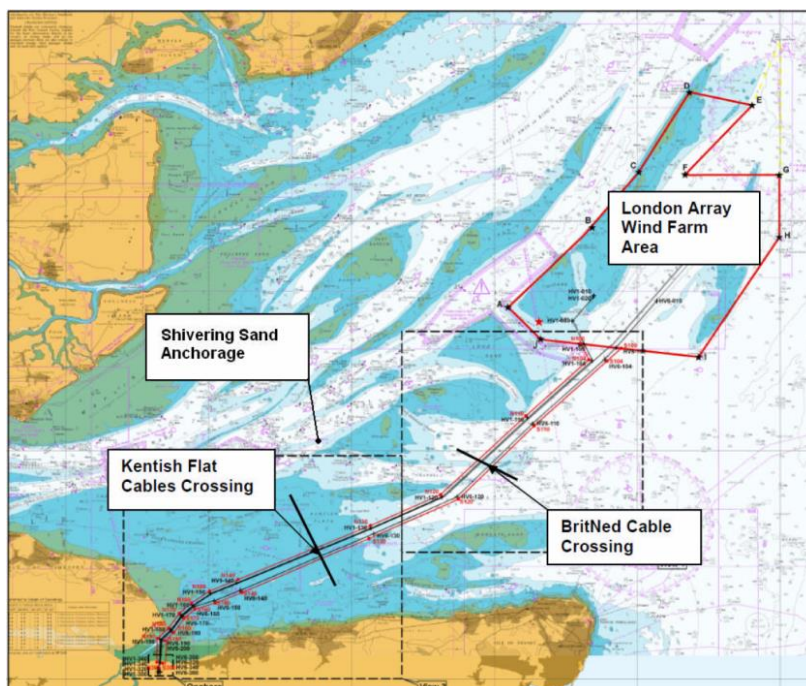
Date of Notice	04/05/2016
----------------	------------

**Please promulgate the following as a Notice to Mariners:**

Please be advised that HBC Group, on behalf of London Array Offshore Limited, will be undertaking Subsea Inspection works within the London Array Offshore Wind Farm.

### **Work Site**

The London Array Offshore Wind Farm is located approximately 20km from the Kent and Essex coasts in the outer Thames Estuary. The wind farm consists of 175 turbines delivering a capacity of 630MW. Two offshore substations export the generated electricity to shore based facilities from where it is distributed to the National Grid. The wind farm is located between two sandbanks, Long Sand and Kentish Knock and has varying water depths across the site ranging from 0 to 23m LAT.

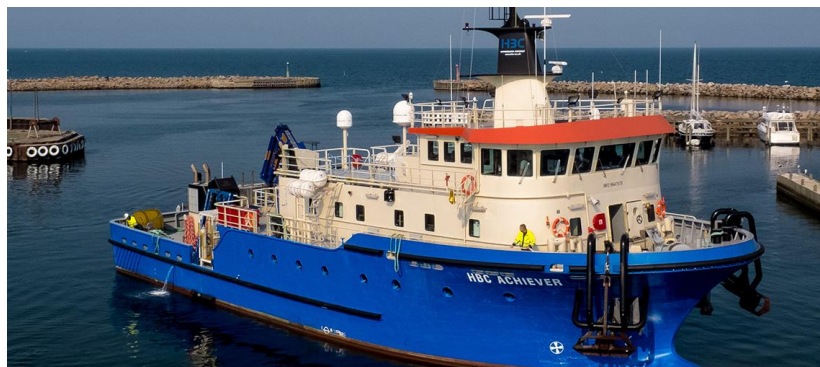


**Figure 1: London Array Offshore Wind Farm Location**

**Vessel:**

Operations conducted on the London Array Wind Farm will be undertaken from the DP1 Diving Support Vessel 'HBC Achiever', in conjunction with support Tender 'HBC Tender'. Both vessels will be based at Sheerness Docks with HBC Tender transiting to site as required and HBC Achiever primarily remaining moored in the vicinity of the Windfarm

**HBC Achiever**



**Vessel Particulars**

Length OA – 35.99m  
 Beam – 11.44m  
 Draught - 3.09m  
 Call Sign – OWMH2  
 IMO - 9647978

**HBC Tender**



**Vessel Particulars**

Length OA – 7.85m  
 Beam – 2.94m  
 Draught - 0.71m  
 Call Sign – V3SB5  
 MMSI - 581310014



**Operational Overview:**

Operations will include surface supplied air diving and vessel mooring in the vicinity of the London Array Wind Farm substations and various wind turbine locations.

Location	Position			
	Lat		Lon	
<b>LAW</b>	North		East	
SS1	51	37,8153	001	26,2075
SS2	51	36,1476	001	32,0843
A13	51	35,3997	001	26,1757
A14	51	35,6337	001	25,7552
B12	51	35,5808	001	27,1765
B13	51	35,8107	001	26,7508
B16	51	36,5017	001	25,4728
C11	51	35,7579	001	28,1730
D13	51	36,6261	001	27,8900
D14	51	36,8554	001	27,4649
E02	51	34,5014	001	33,1460
F04	51	35,3692	001	32,8645
F05	51	35,5993	001	32,4379
H17	51	39,1919	001	28,4348
J15	51	39,5316	001	30,4604
J17	51	39,9908	001	29,6107
K14	51	39,7070	001	31,4586
K17	51	40,4017	001	30,1634
K18	51	40,6209	001	29,7729
L17	51	40,8047	001	30,7505
M15	51	40,7518	001	32,1719
M17	51	41,2123	001	31,3204

**Safety Zones & Site Restrictions:**

Throughout all diving operations, a 500m exclusion zone will be enforced around the HBC Achiever and HBC Tender. Vessels operating in the area are advised not to approach without making contact.

**Key Dates:**

Start date: 04/05/2016  
 Estimated finish date: 31/05/2016



**Further Information:**

Should you require any further information regarding the above operations please do not hesitate to contact:-

**Contact:** Luke Ansell (Subsea Field Manager)

**Telephone :** +44 7525128594

**Email:** xluka@dongenergy.co.uk

5 Howick Place  
Westminster  
SW1P 1WG  
London  
United Kingdom

Any general enquiries for the London Array Wind Farm can be directed through its website\* using the enquiry form at "Contact Us" <http://www.londonarray.com/contact-us/>

\*Website enquiries are monitored on a daily basis