



# Notice to Mariners

09/2015

## Extension of Notice to Mariners 07/2015

Date of Notice	4 <sup>th</sup> May 2015
----------------	--------------------------

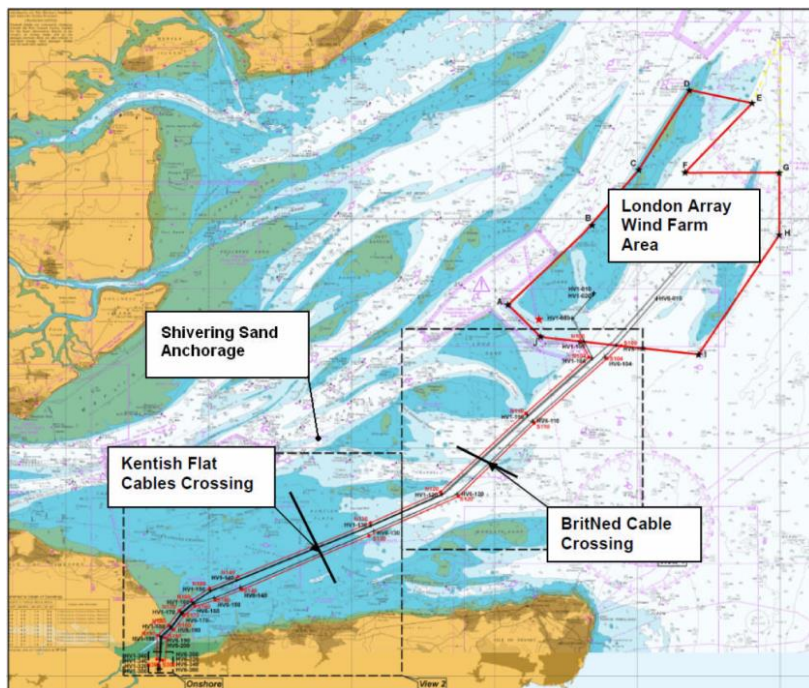
**Please promulgate the following as a Notice to Mariners:**

Please be advised that A2SEA will be undertaking essential maintenance work on behalf of London Array Offshore Limited from 26<sup>th</sup> April 2015.

Due to weather conditions the expected completion date has now been changed to 12<sup>th</sup> May 2015.

### **Work Site**

The London Array Offshore Wind Farm is located approximately 20km from the Kent and Essex coasts in the outer Thames Estuary. The wind farm consists of 175 turbines delivering a capacity of 630MW. Two offshore substations export the generated electricity to shore based facilities from where it is distributed to the National Grid. The wind farm is located between two sandbanks, Long Sand and Kentish Knock and has varying water depths across the site ranging from 0 to 23m LAT.



**Figure 1: London Array Offshore Wind Farm Location**

**Vessel:**

Works conducted by A2SEA will be undertaken by the Jack Up Vessel "Sea Challenger"

**Sea Challenger****Vessel Particulars**

Length - 132.41m  
Breadth - 39.00m  
Draft - 5.8m  
Call Sign - OWLQ2  
MMSI - 219019002  
IMO - 9658290

**Operational Overview:**

Operations will include jack up and craning operations in the vicinity of turbines:

M16 - 51° 40.982'N 001° 31.747'E

L17 - 51° 40.805'N 001° 30.750'E

**Safety Zones & Site Restrictions:**

There will be a 500m safety zone around the Sea Challenger during maintenance works, and all vessels are asked to be especially aware when it can be observed that the vessel is manoeuvring into position. It should be noted that the vessel will move to a new position or exit the Wind Farm without prior notification.

**Key Dates:**

Start Date: 26<sup>th</sup> April 2015

Estimated finish date: 12<sup>th</sup> May 2015



**Further Information:**

Should you require any further information regarding the above operations please do not hesitate to contact London Array:-

**Contact:** Miles Wakefield, Balance of Plant Manager

**Telephone :** +44 (0)1843 855797

**Email:** miles.wakefield@londonarray.com

The London Array Management Building

Port of Ramsgate

Military Road

Ramsgate

Kent

CT11 9LG

United Kingdom

Any general enquiries for the London Array Wind Farm can be directed through its website\* using the enquiry form at "Contact Us" <http://www.londonarray.com/contact-us/>

\*Website enquiries are monitored on a daily basis