

Notice to Mariners

10/2015

Jack Up Vessel Operations London Array Offshore Wind farm

Date of Notice

5th June 2015

Please promulgate the following as a Notice to Mariners:

Please be advised that A2SEA will be undertaking essential maintenance work on behalf of London Array Offshore Limited from 6th June 2015.

Work Site

The London Array Offshore Wind Farm is located approximately 20km from the Kent and Essex coasts in the outer Thames Estuary. The wind farm consists of 175 turbines delivering a capacity of 630MW. Two offshore substations export the generated electricity to shore based facilities from where it is distributed to the National Grid. The wind farm is located between two sandbanks, Long Sand and Kentish Knock and has varying water depths across the site ranging from 0 to 23m LAT.

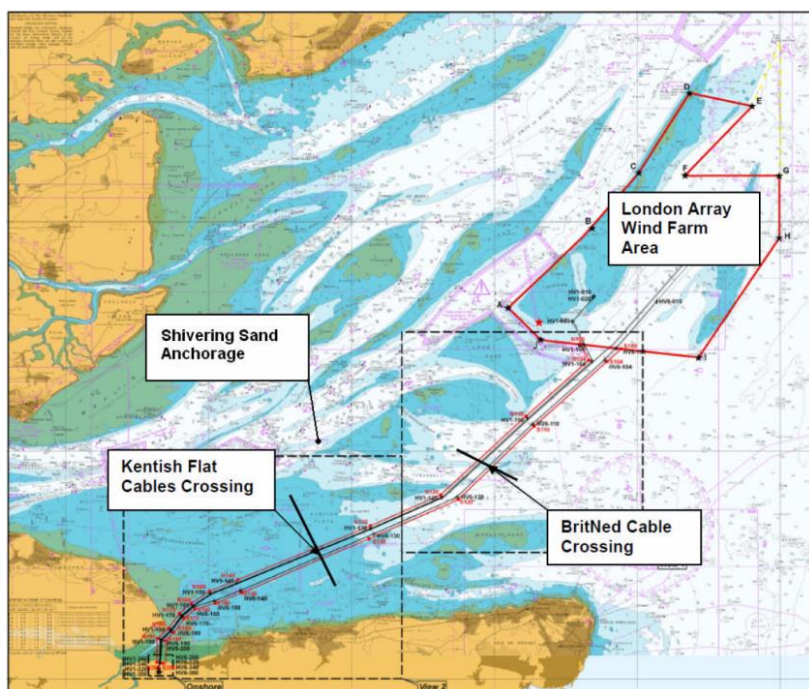


Figure 1: London Array Offshore Wind Farm Location

Vessel:

Works conducted by A2SEA will be undertaken by the Jack Up Vessel "Sea Challenger"

Sea Challenger**Vessel Particulars**

Length - 132.41m
Breadth - 39.00m
Draft - 5.8m
Call Sign - OWLQ2
MMSI - 219019002
IMO - 9658290

Operational Overview:

Operations will include jack up and craning operations in the vicinity of turbine:

H10 - 51° 37.564'N 001° 31.450'E

Safety Zones & Site Restrictions:

There will be a 500m safety zone around the Sea Challenger during maintenance works, and all vessels are asked to be especially aware when it can be observed that the vessel is manoeuvring into position. It should be noted that the vessel will move to a new position or exit the Wind Farm without prior notification.

Key Dates:

Start Date: 06th June 2015

Estimated finish date: 13th June 2015



Further Information:

Should you require any further information regarding the above operations please do not hesitate to contact London Array:-

Contact: Miles Wakefield, Balance of Plant Manager

Telephone : +44 (0)1843 855797

Email: miles.wakefield@londonarray.com

The London Array Management Building
Port of Ramsgate
Military Road
Ramsgate
Kent
CT11 9LG
United Kingdom

Any general enquiries for the London Array Wind Farm can be directed through its website* using the enquiry form at "Contact Us" <http://www.londonarray.com/contact-us/>

*Website enquiries are monitored on a daily basis