

# Notice to Mariners

13/2015

## Diving and Construction Work 2015 London Array Offshore Wind Farm

Date of Notice

6<sup>th</sup> July 2015

Please promulgate the following as a Notice to Mariners:

**This Notice to Mariners supersedes 08/2015**

Please be advised Falmouth Divers and Thomas Services Maritimes on behalf of London Array Offshore Limited will be undertaking Diving and Construction work within the London Array Offshore Wind Farm.

### Work Site

The London Array Offshore Wind Farm is located approximately 20km from the Kent and Essex coasts in the outer Thames Estuary. The wind farm consists of 175 turbines delivering a capacity of 630MW. Two offshore substations export the generated electricity to shore based facilities from where it is distributed to the National Grid. The wind farm is located between two sandbanks, Long Sand and Kentish Knock and has varying water depths across the site ranging from 0 to 23m LAT.

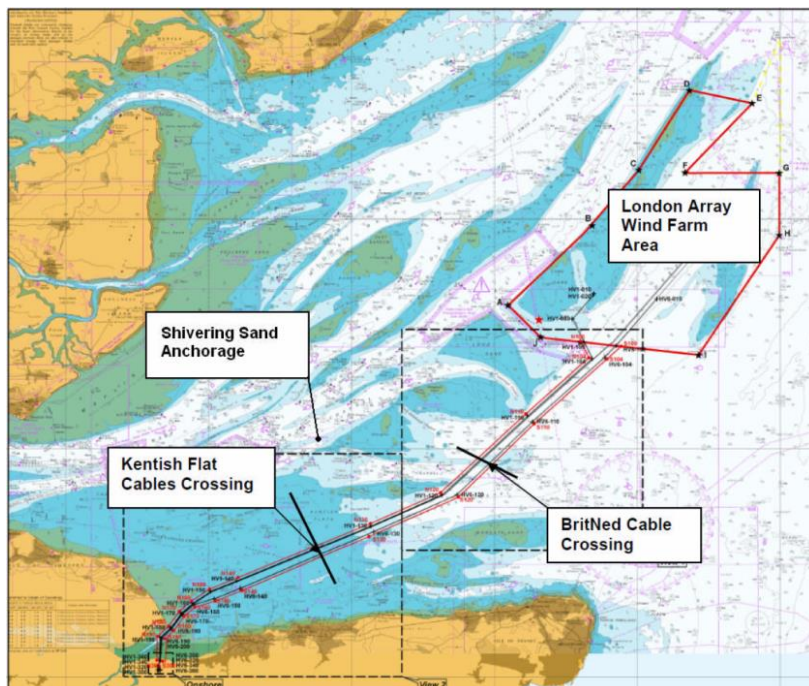


Figure 1: London Array Offshore Wind Farm Location

**Vessel:**

Operations conducted on the London Array Wind Farm will be undertaken from the shallow water vessel 'Myss' which will primarily navigate to and from the Port of Ramsgate on a daily basis.

**Myss**



**Vessel Particulars**

Length OA – 19.40m  
 Breadth – 6.00m  
 Draft - 1.0m  
 Call Sign – FG 8851  
 MMSI – 227 597 130

**Operational Overview:**

Operations will include surface supplied air diving and vessel mooring in the vicinity of the London Array Wind Farm substations (SS1 & SS2) and various wind turbine locations.

**Safety Zones & Site Restrictions:**

Throughout all diving operations, a 500m exclusion zone will be enforced around the Myss. Vessels operating in the area are advised not to approach without making contact.

**Key Dates:**

Start date: 8<sup>th</sup> July 2015  
 Estimated finish date: August 2015



**Further Information:**

Should you require any further information regarding the above operations please do not hesitate to contact London Array:-

**Contact:** Miles Wakefield, Balance of Plant Manager

**Telephone :** +44 (0)1843 855797

**Email:** miles.wakefield@londonarray.com

The London Array Management Building

Port of Ramsgate

Military Road

Ramsgate

Kent

CT11 9LG

United Kingdom

Any general enquiries for the London Array Wind Farm can be directed through its website\* using the enquiry form at "Contact Us" <http://www.londonarray.com/contact-us/>

\*Website enquiries are monitored on a daily basis