



Notice to Mariners

12/2015

London Array Cable Operations London Array Offshore Wind farm

Date of Notice	4 th July 2015
----------------	---------------------------

Please promulgate the following as a Notice to Mariners:

Update

Please be aware that the exclusion zone required around vessel M.P.R.3 has been increased to 500m and that this Notice replaces the previously issued Notice 11/2015

Please be advised that M.P.R.3 will be undertaking essential maintenance work on behalf of London Array Offshore Limited from 4th July 2015.

Work Site

The London Array Offshore Wind Farm is located approximately 20km from the Kent and Essex coasts in the outer Thames Estuary. The wind farm consists of 175 turbines delivering a capacity of 630MW. Two offshore substations export the generated electricity to shore based facilities from where it is distributed to the National Grid. The wind farm is located between two sandbanks, Long Sand and Kentish Knock and has varying water depths across the site ranging from 0 to 23m LAT.

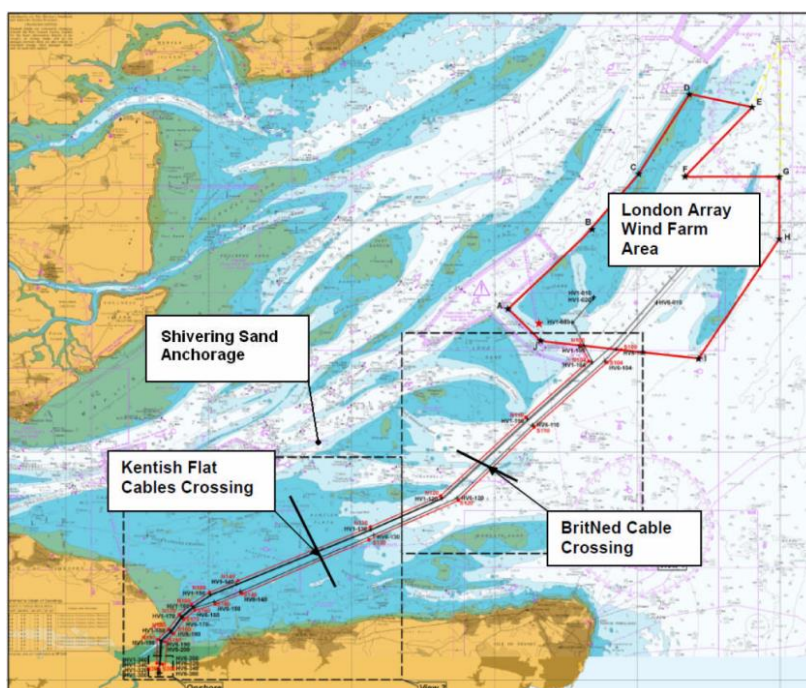


Figure 1: London Array Offshore Wind Farm Location

Vessel:

Works will be undertaken by the Vessel "M.P.R.3"

M.P.R.3



Vessel Particulars

Length - 32m
Breadth - 11m
Draft - 2.7m
Call Sign - PCKT
MMSI - 246172000
IMO - 9611539

Operational Overview:

M.P.R.3 Will be performing cable operations in the areas of:

Substation 1 – 51° 37.815'N 001° 26.209'E

Substation 2 – 51° 36.148'N 001° 32.085'E

Safety Zones & Site Restrictions:

There will be a **500m** safety zone around the Sea Challenger during maintenance works.

Key Dates:

Start Date: 04th July 2015

Estimated finish date: 10th August 2015



Further Information:

Should you require any further information regarding the above operations please do not hesitate to contact London Array:-

Contact: Miles Wakefield, Balance of Plant Manager

Telephone : +44 (0)1843 855797

Email: miles.wakefield@londonarray.com

The London Array Management Building

Port of Ramsgate

Military Road

Ramsgate

Kent

CT11 9LG

United Kingdom

Any general enquiries for the London Array Wind Farm can be directed through its website* using the enquiry form at "Contact Us" <http://www.londonarray.com/contact-us/>

*Website enquiries are monitored on a daily basis